

Jürgen Radermacher

Dipl.-Ing.

Büro für Verkehrsingenieurbau GmbH



Project:

# Track Work in Slab Track

**Nürnberg –  
Ingolstadt**

Preliminary -  
Intermediate -  
and

Detailed Design

of the  
Rheda 2000

Slab Track

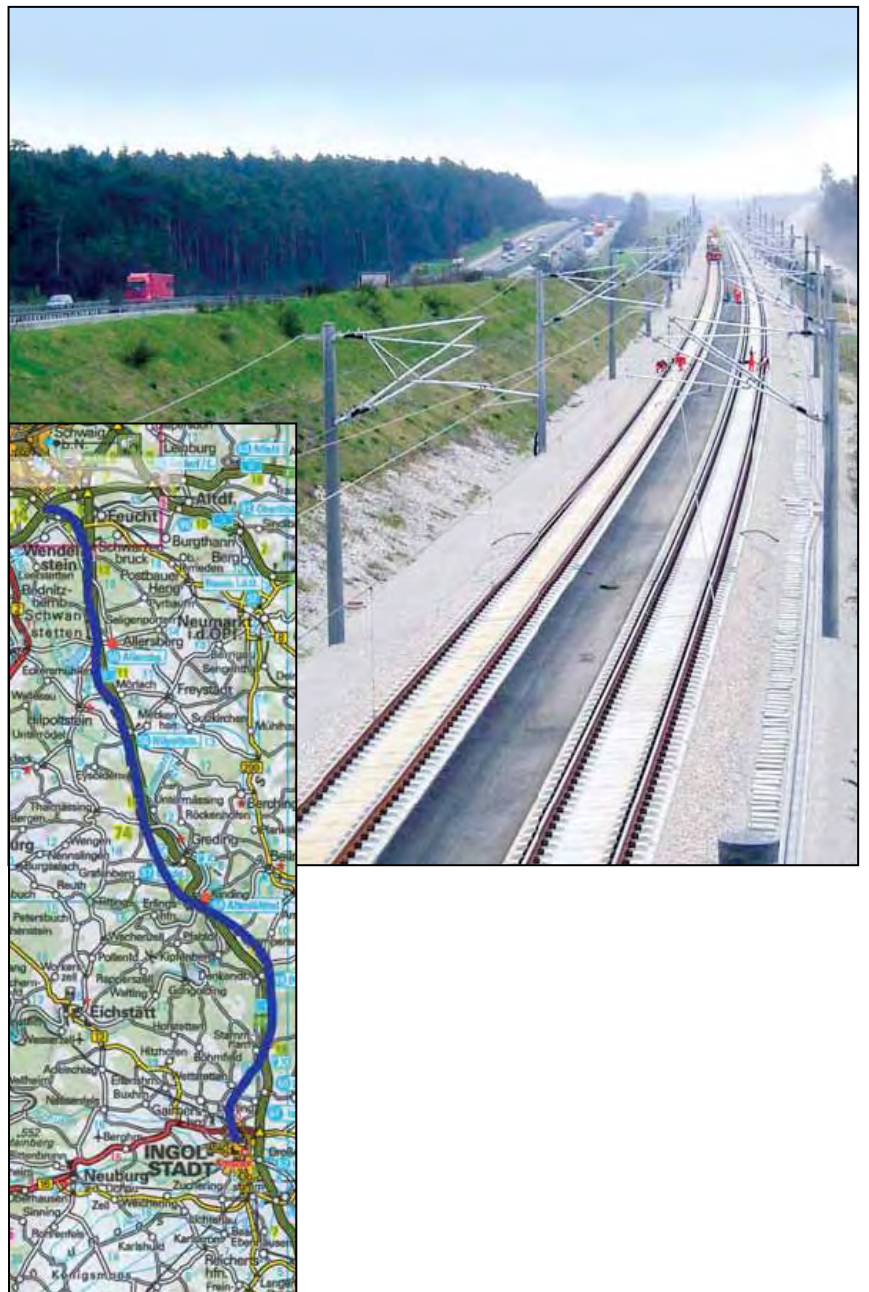
System,

Section

Fischbach –

Feucht

2001-2002



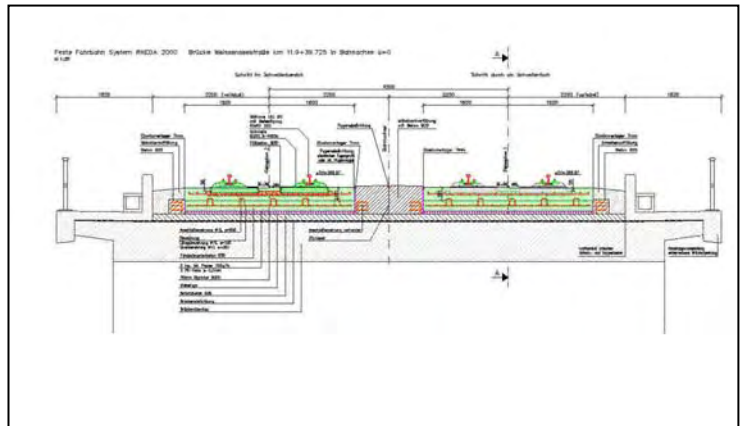
The Engineering Office J. Radermacher GmbH was charged by the Contractor for track installation to deliver the preliminary-, intermediate-, final design and as built drawings for the track work. The line is constructed in Rheda 2000 System. The alignment in this track section is designed for a speed of 300 km/h.



**Rheda 2000 Track before infill of concrete**

Special emphasis was given to the construction of the track slab passing two box culverts. This construction needs no gap in the track slab, but special construction has to be performed passing such bridges.

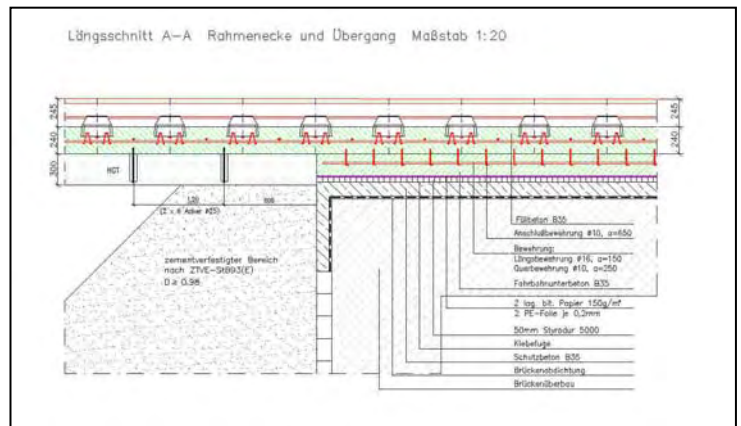
The engineering project was established in 2001-2002.



**Cross section with supplement levelling concrete on a box culvert**



**Rheda 2000 Track on embankment during construction**



**Transition embankment – box culvert**