

Jürgen Radermacher

Dipl.-Ing.

Büro für Verkehrsingenieurbau GmbH



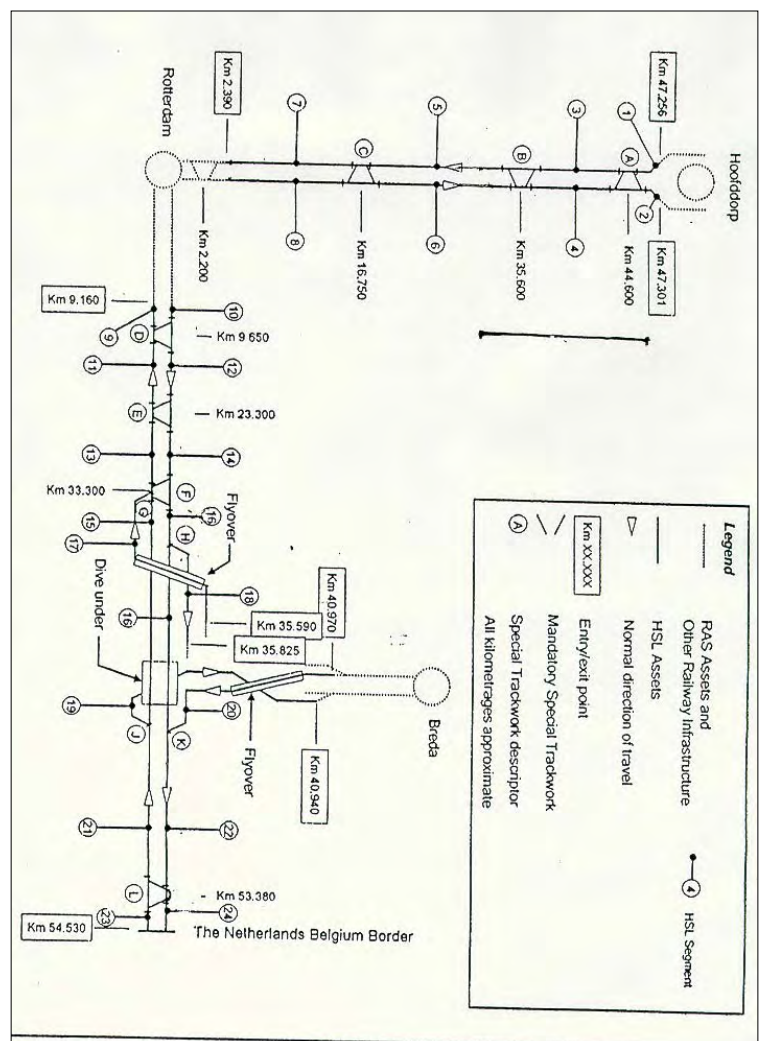
Project:

# Track Work in Slab Track

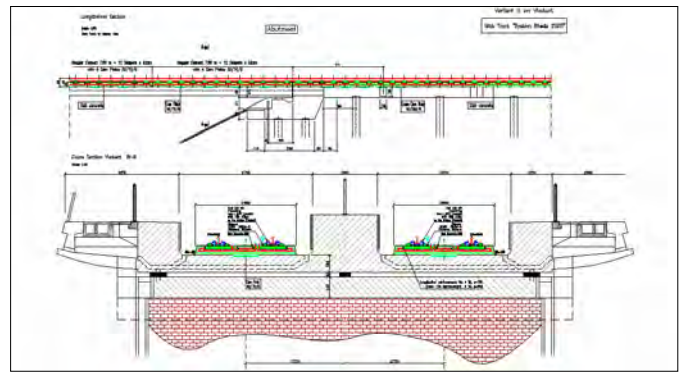
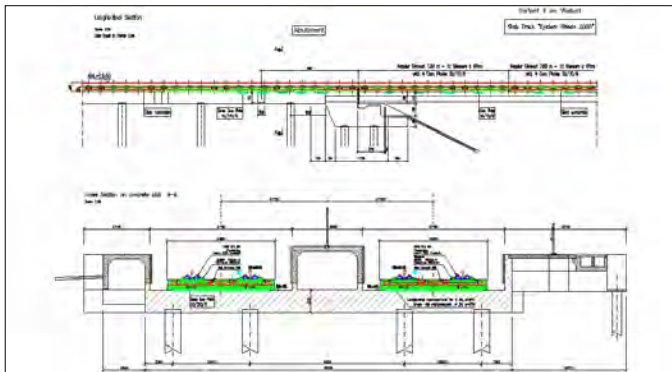
## HSL Zuid Holland

System Design  
of Slab Track  
with all  
Special  
Arrangements  
and  
Transitions

1999 - 2004

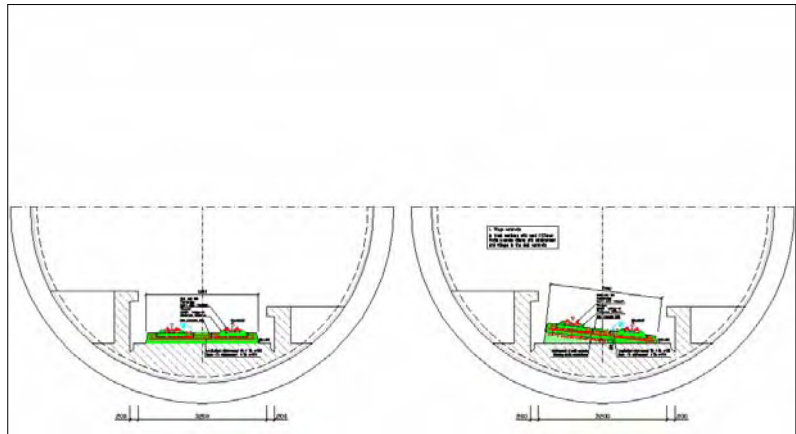


The Railway Authorities in the Netherlands are going to prepare a high-speed-railway network. A joint venture of constructors charged the office for modifying the ‘Rheda 2000’ slab track system for the special request of substructures as bridges, viaducts, tunnels as bored tunnels and cut and cover tunnel sections with the respective transitions.

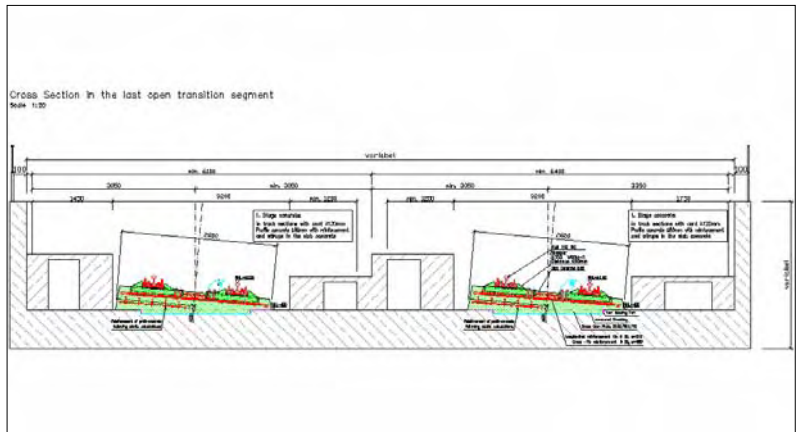


**Bridges, viaducts and transitions**

**Bored tunnel section**



**Cut and cover tunnel section**



In 2002 our office was charged by the track work contractor to produce the final design for the turnouts in this project. These turnouts were installed on the typical HSL substructure piled slabs with a slab length of about 30 m. Following types of turnouts were installed:

- EW60-10000-4000-1:39,173-fb-FF                      1 turnout
- EW60-2286-28936-1:34,7-fb-FF                      15 turnouts
- EW60-7601:15 (B)                                      4 turnouts
- EW60-500-1:12-fb-FF                                 2 turnouts