



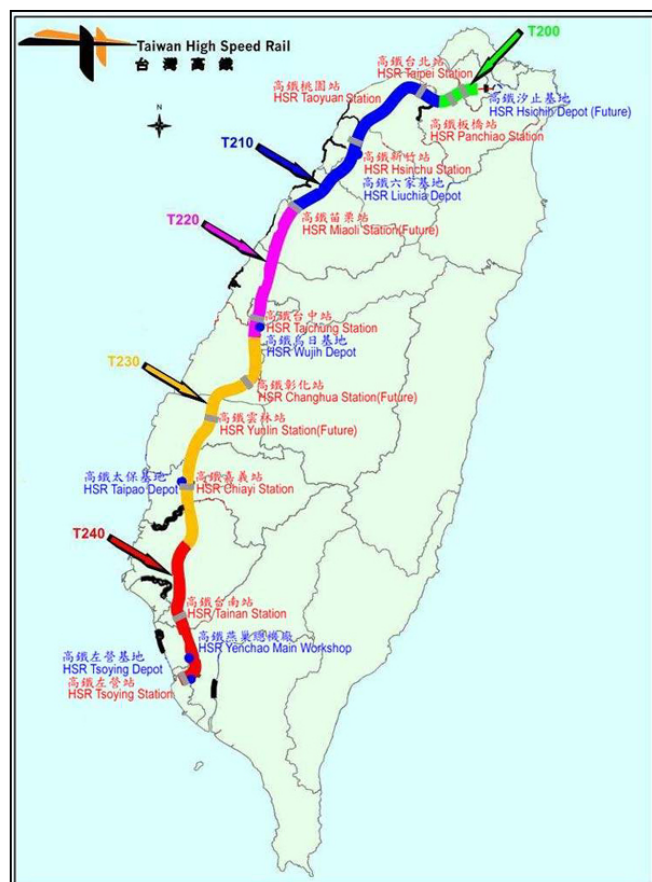
Project:

# Track Work in Slab Track

## High Speed Line Taipei - Kaoshiung

System-,  
Preliminary-,  
Intermediate-,  
Final- and  
as built Design  
of Slab Track and  
Turnouts on  
viaducts,  
embankment and  
in tunnels

2002 -2005



The Office J. Radermacher GmbH was charged by the track work contractor to perform the preliminary-, intermediate-, final design and as built design for this track work project.



**Rheda 2000 Track during construction in station**

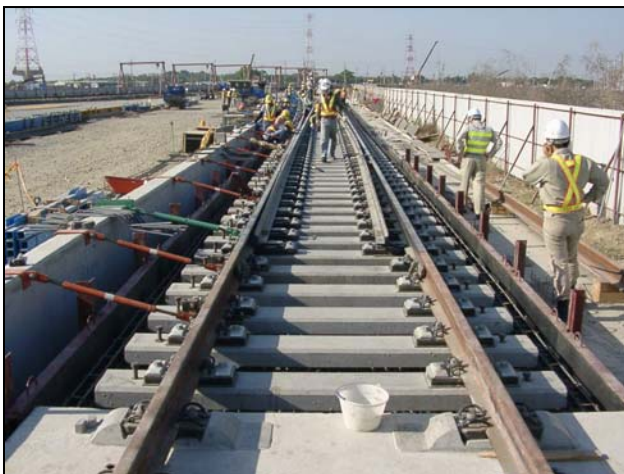
The contract covers all Rheda 2000 Track and Turnout layout for this High Speed Project.



**Installation of demo track and turnout**



**Rheda 2000 Track and turnouts were constructed on viaducts and on steel bridges with special arrangements**

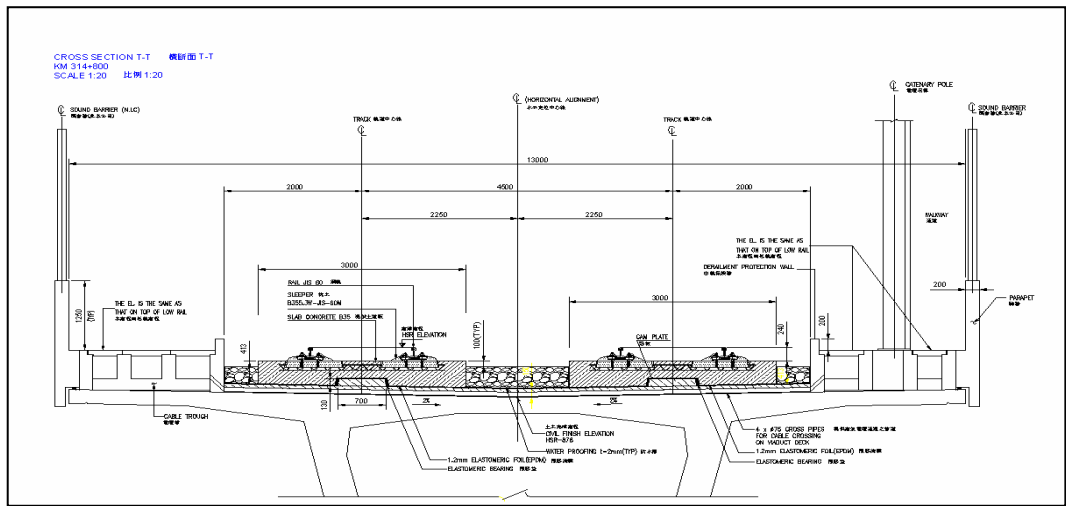


**For formation of personnel demo tracks and turnouts were installed in the depot area.**

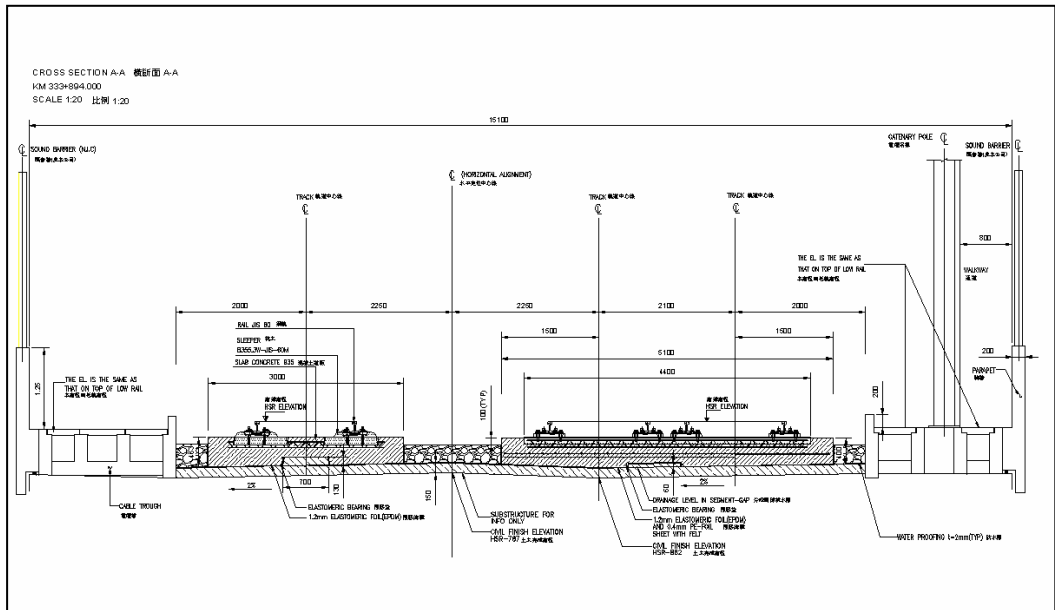
All stations with about 50 km Rheda 2000 Track and 134 high speed turnouts are constructed in this system on viaducts, on embankment and in tunnels.



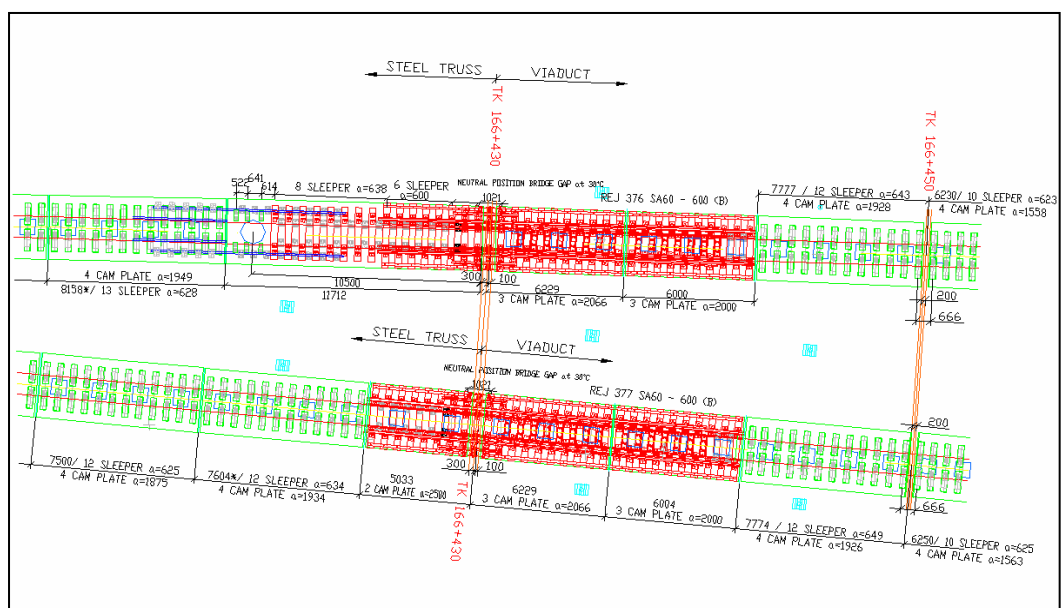
**Track work construction was finalised in 1995**



Typical cross section of Rheda 2000 Track on viaducts



Cross section on viaducts for regular track and turnout slab



Special arrangement for rail expansion joint